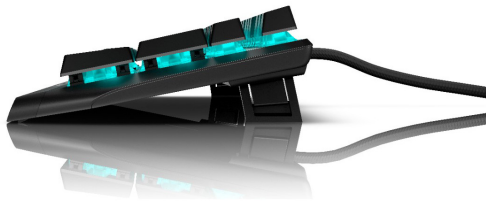




## Dell Alienware RGB Mechanical Gaming Keyboard US English - AW410K

Model No: DELL-GK-AW410K-RGBMECH



### Price:

---

Rs. 50,799

### Warranty:

---

2 Years(s) manufacturer warranty.  
2 Year Manufacturer Warranty.

## Delivery:

---

Delivery - Standard 3 To 5 Working Days.

- Delivery Within 3 Working Days For Colombo And Suburbs, 5 Working Days For Other Locations.
- For Any Invoice Up To Rs.9,999, A Delivery Rate Of Rs.500 Will Be Charged.
- For Any Invoice From Rs.10,000 To 19,999, A Delivery Rate Of Rs.700 Will Be Charged.
- For Any Invoice From Rs.20,000 To 49,999, A Delivery Rate Of Rs.900 Will Be Charged.
- For Any Invoice From Rs.50,000 To 99,999, A Delivery Rate Of Rs.1200 Will Be Charged.
- For Any Invoice From Rs.100,000 To 149,999, A Delivery Rate Of Rs.1500 Will Be Charged.
- For Any Invoice From Rs.150,000 And Above, A Delivery Rate Of Rs.2000 Will Be Charged.

## Specifications:

---

- Model: DELL-GK-AW410K-RGBMECH
- Type: RGB Mechanical Gaming Keyboard
- Interface: USB
- Layout: English (UK)
- Hot Keys Function: Volume, mute, play/pause, stop, backward, skip backward, skip forward
- Special Functions: Numeric keypad, Key Switch Type-CHERRY MX Brown
- Gaming Functions: Latest generation Cherry MX Brown keys, Customizable per-key AlienFX RGB backlighting with a Dedicated audio controls for fast & accurate adjustability approximately 16.8 million colors, 100 million keystroke lifespan with no loss of quality, Fully programmable keys for macros and key assignments, USB passthrough and dedicated media keys, Anti-ghosting/N-Key rollover, Slim floating key architecture, Solid metal top plate
- Wireless / Nano Receiver: Wired
- Backlit: RGB/ Approx. 16.8 million colors
- Dimensions: Height: 1.41" (3.58cm) | 2. Width: 18.3" (46.7cm) | 3. Depth: 6.14" (15.6cm)
- Weight: 2.23lb (1.01kg)
- Colors: Dark Side of the Moon
- System Requirements: Windows 10
- Other Information: Included Software- AlienFX, Cable Length- 6.5 ft
- Warranty: 2 Year Warranty

Date: 2024-12-02 18:29